

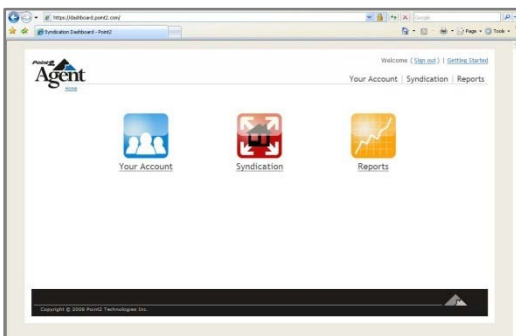
Syndication Dashboards and Point2 Agent Accounts



How do they compare?

Syndication Dashboard

- FREE through your MLS/Association
- Syndicates and advertises your listings to over 36 Syndication Partners
- Control panel for determining Syndication Partner settings



- Provides reporting on listing views and leads

MLS# - Address	Views	Prospects
20292521 - 101 X 9 Uncle Alberts Rd, Chatham	17	0
20292548 - 81 Fairview Dr, South Chatham	18	4
20292620 - 0 1359 Main St, Chatham	18	1
20291977 - 1359 Main St, Chatham	51	1
20292032 - 12 Dew Dr, South Chatham	15	4
20292095 - 653 Main St, Harwich	14	4
20292839 - 14 Tern Rd, South Yarmouth	29	9
20292364 - 70 Winslow Dr, South Orleans	9	0
20292327 - 38 Soundings Ln, South Chatham	42	9
20292302 - 15 Sylvan Way, South Chatham	9	0

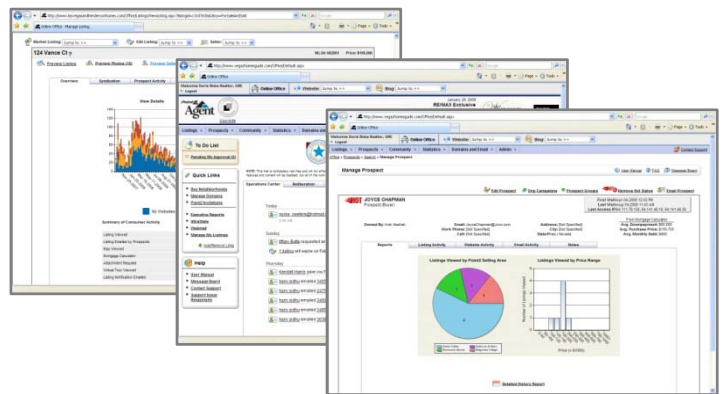
You receive the following:

- Syndication to Syndication Partners – you choose where you advertise.
- Syndication Dashboard – for determining Syndication settings and accessing reports.
- Leads – sent to you via email.

All of this - at **no additional cost!**

Point2 Agent Account

- Starting at \$19.99 per month
- Enhanced Syndication
- Advanced analytics, lead generation tools, and lead management
- Optional website, design tools, and traffic reports



You have the following options to meet your needs:



Standard membership:

- Optional website
- Enhanced Syndication
- Further lead generation tools
- And more...free 3 month trial, then \$19.99/month



Professional membership:

- Standard features
- Additional lead generation tools
- Advanced analytics
- And more...for \$49.95/month



Premium:

- Professional features
- Unlimited website size
- Enhanced Broker tools
- And more...for \$119.95/month

Leads provided to you at **no additional cost!**

For more information and resources, visit <http://Features.Point2AgentEducation.com>

